

# THE WONDERFUL WORLD OF OOB'S

FRAME  
WHAT?



## FRAME WARPING INTRODUCTION TUTORIAL

MANY THANKS TO STEVEKIN FOR HIS HELP IN PROOFING THIS TUTORIAL  
AND THE GREAT TIPS HE PROVIDED! SEE HIS GALLERY HERE :  
[HTTP://FLICKR.COM/PHOTOS/STVEKIN/](http://flickr.com/photos/stevekin/)

**WHEN CREATING OOB'S THERE WILL BE AN OCCASION WHEN THE TRADITIONAL FLAT RECTANGULAR FRAME JUST WILL NOT DO. IN THIS TUTORIAL WE WILL DO UNIMAGINABLE THINGS TO OUR FRAME...SUCH AS WARPING IT! WHAT IS MEANT BY "FRAME WARPING?" ...SEE BELOW.**

**FRAME WARPING IS THE BENDING & TWISTING OF THE WHITE BORDER... OR FRAME. IN SOME CASES WARPING THE FRAME CAN GREATLY ADD TO THE 3D ILLUSION OF AN OOB.**



**THE FRAME HERE IS BEING PULLED DOWN BY MY SON'S GRASP AS HE CLIMBS THE CLIMBING WALL.**

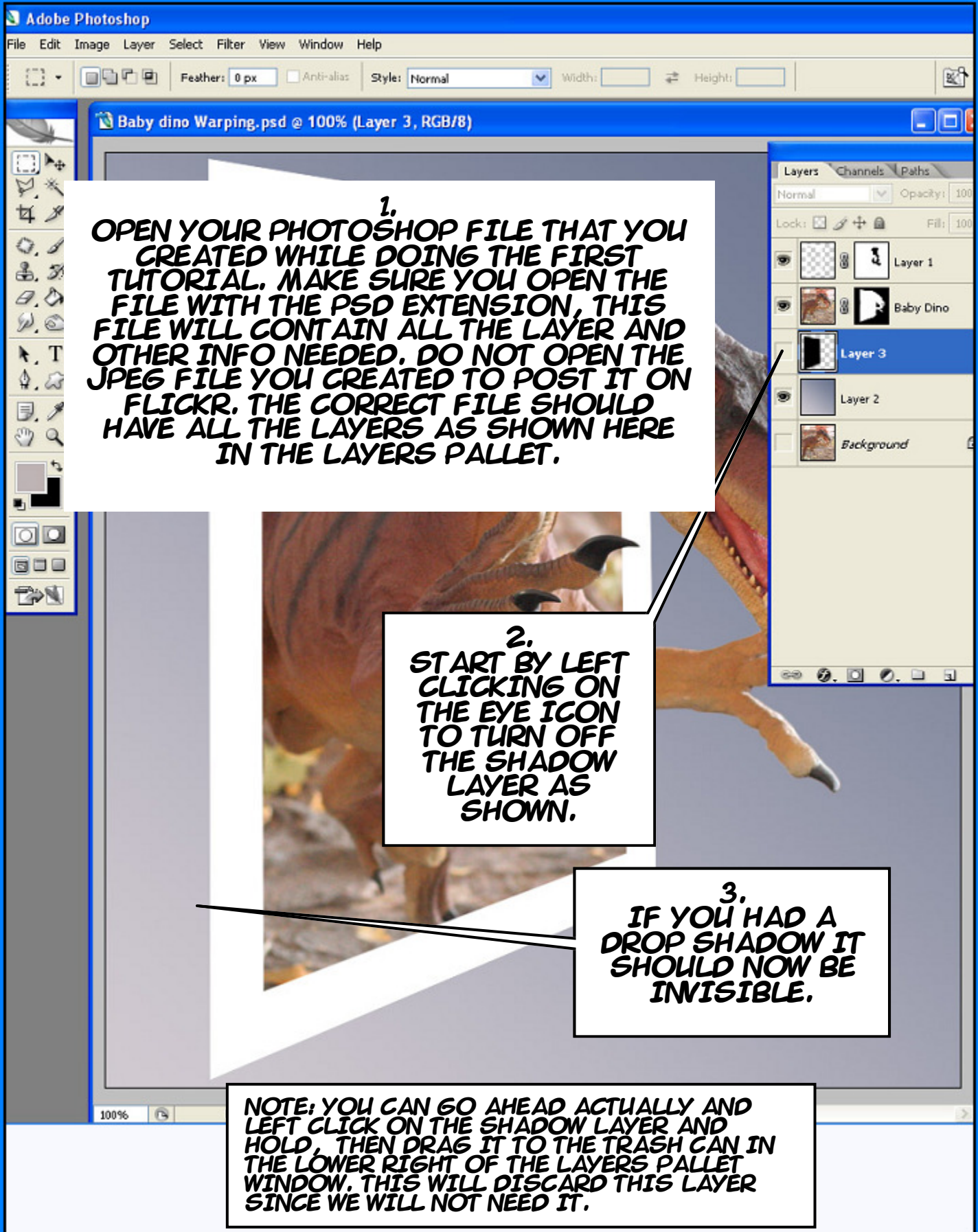
**IN THIS CASE I AM CREATING THE ILLUSION THAT MY SON IS DISTORTING THE FRAME BY HIM STEPPING ON IT.**



**IN THIS PIC I  
CHOSE TO CURL  
THE PHOTO  
CORNER USING  
THE WARP TOOL.  
THIS IS A LITTLE  
MORE WORK BUT  
STILL EASY ONCE  
YOU SEE HOW TO  
DO IT!**

**FRAME WARPING CAN BE A FUN ELEMENT  
TO ADD TO ANY OOB TO SPICE IT UP!**

**WE'LL LET'S START IN ON AND GO INTO  
"WARP-DRIVE"....!)**



**1.**  
**OPEN YOUR PHOTOSHOP FILE THAT YOU CREATED WHILE DOING THE FIRST TUTORIAL. MAKE SURE YOU OPEN THE FILE WITH THE PSD EXTENSION, THIS FILE WILL CONTAIN ALL THE LAYER AND OTHER INFO NEEDED. DO NOT OPEN THE JPEG FILE YOU CREATED TO POST IT ON FLICKR. THE CORRECT FILE SHOULD HAVE ALL THE LAYERS AS SHOWN HERE IN THE LAYERS PALLET.**

**2.**  
**START BY LEFT CLICKING ON THE EYE ICON TO TURN OFF THE SHADOW LAYER AS SHOWN.**

**3.**  
**IF YOU HAD A DROP SHADOW IT SHOULD NOW BE INVISIBLE.**

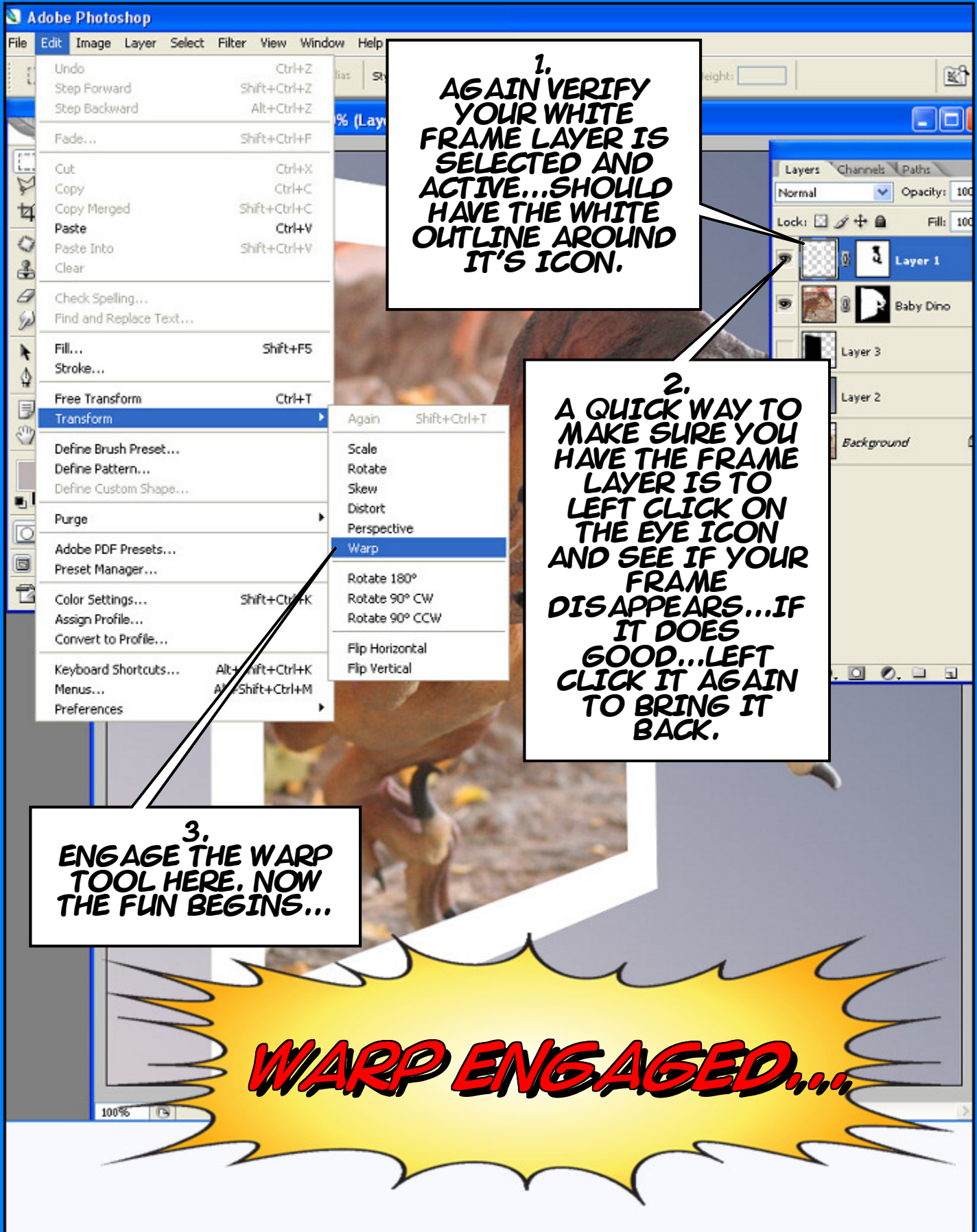
**NOTE: YOU CAN GO AHEAD ACTUALLY AND LEFT CLICK ON THE SHADOW LAYER AND HOLD, THEN DRAG IT TO THE TRASH CAN IN THE LOWER RIGHT OF THE LAYERS PALLET WINDOW. THIS WILL DISCARD THIS LAYER SINCE WE WILL NOT NEED IT.**

1.  
LEFT CLICK ON  
YOUR LAYER THAT  
CONTAINS THE  
WHITE FRAME. MAKE  
SURE YOU CLICK ON  
THE LEFT MOST  
ICON AS SHOWN  
AND NOT THE RIGHT  
MOST ICON...THAT  
WOULD BE THE  
MASK.

FRAME  
MASK  
ICON!

2.  
NOTICE THE WHITE  
OUTLINE AROUND THE  
LAYER ICON...THIS  
INDICATES IT IS THE  
ACTIVE  
COMPONENT...AND  
THIS IS EXACTLY WHAT  
WE WANT!

**LET'S ENGAGE WARP...**

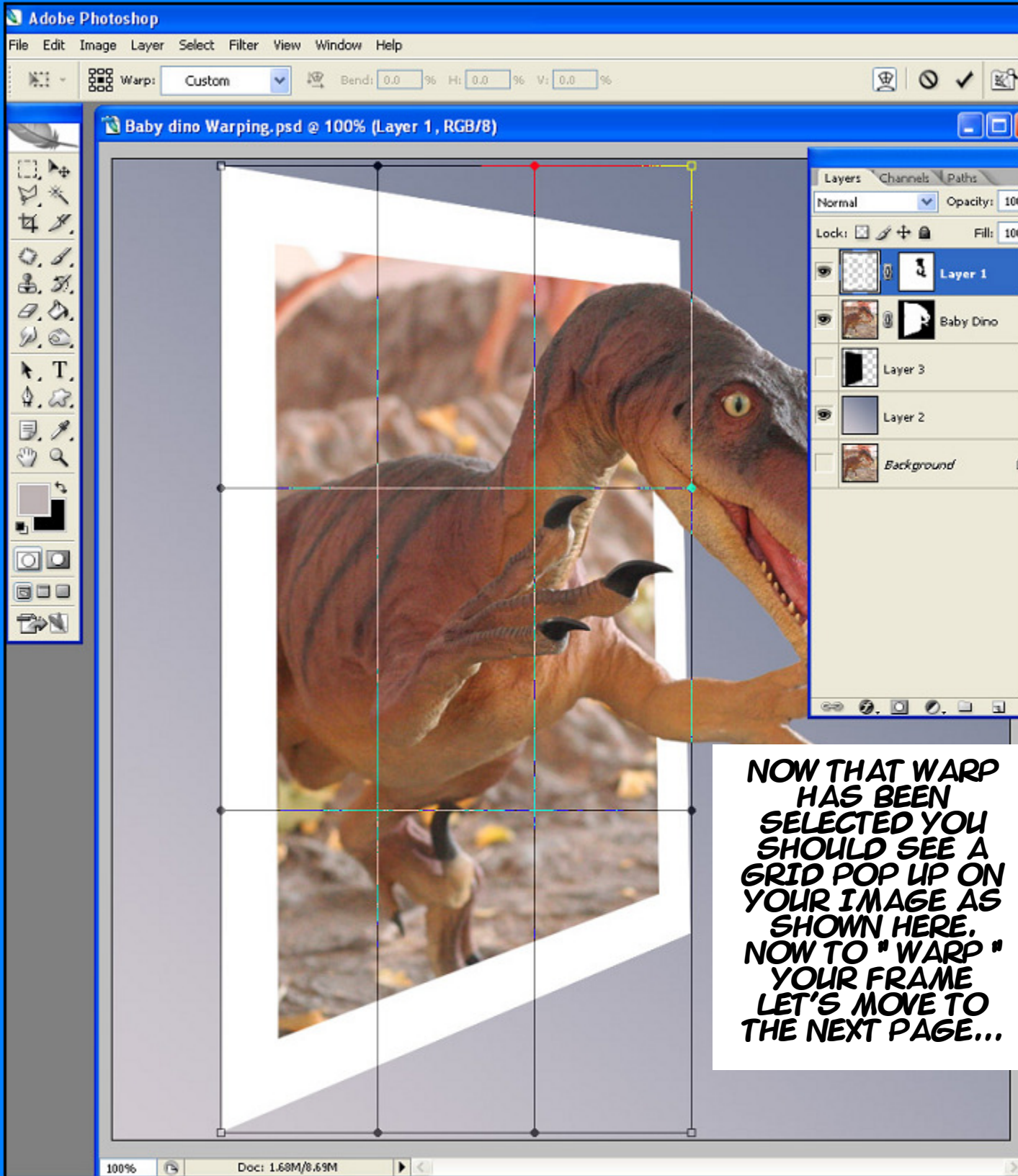


1.  
**AGAIN VERIFY  
YOUR WHITE  
FRAME LAYER IS  
SELECTED AND  
ACTIVE... SHOULD  
HAVE THE WHITE  
OUTLINE AROUND  
IT'S ICON.**

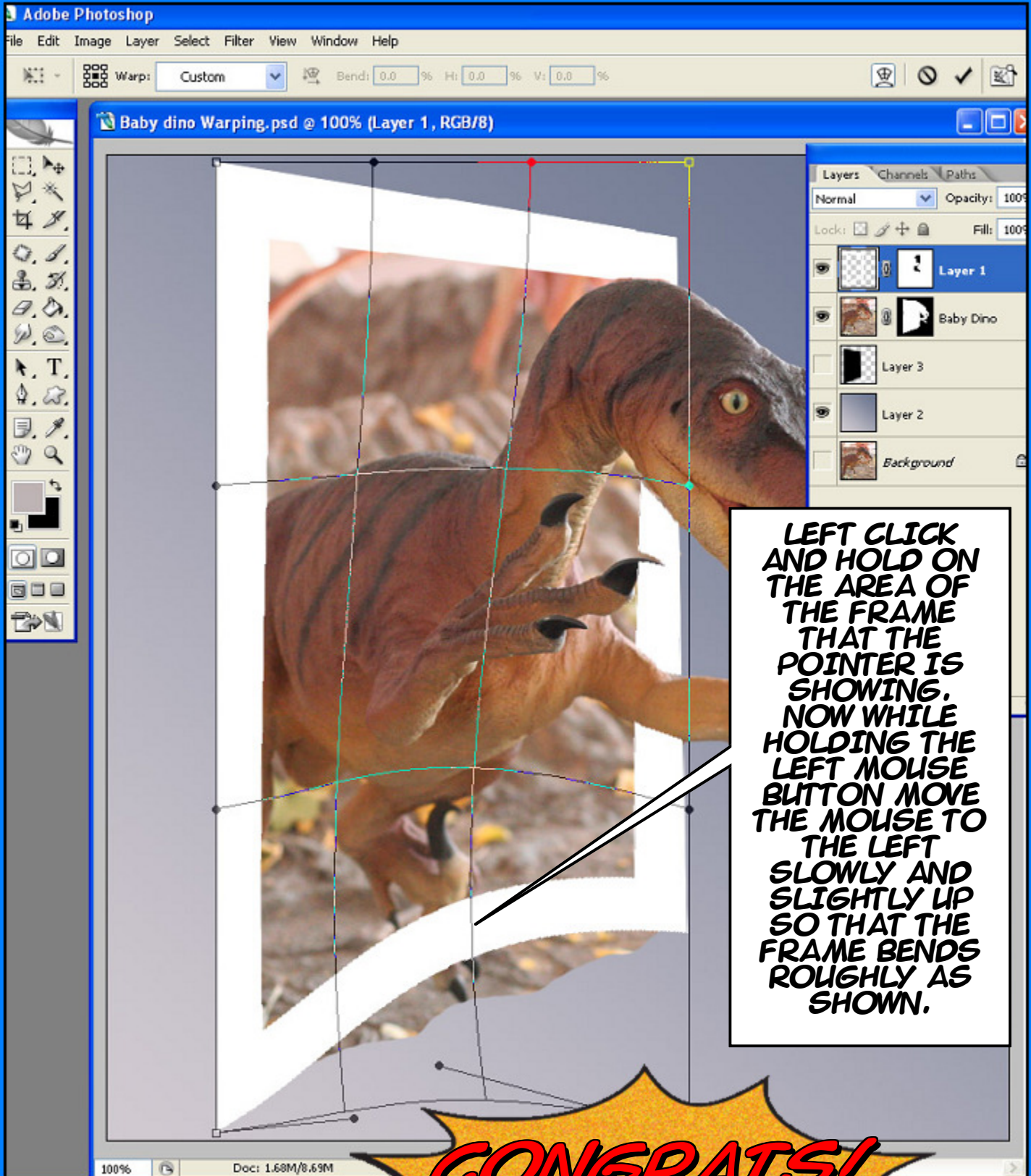
2.  
**A QUICK WAY TO  
MAKE SURE YOU  
HAVE THE FRAME  
LAYER IS TO  
LEFT CLICK ON  
THE EYE ICON  
AND SEE IF YOUR  
FRAME  
DISAPPEARS... IF  
IT DOES  
GOOD... LEFT  
CLICK IT AGAIN  
TO BRING IT  
BACK.**

3.  
**ENGAGE THE WARP  
TOOL HERE, NOW  
THE FUN BEGINS...**

**WARP ENGAGED...**

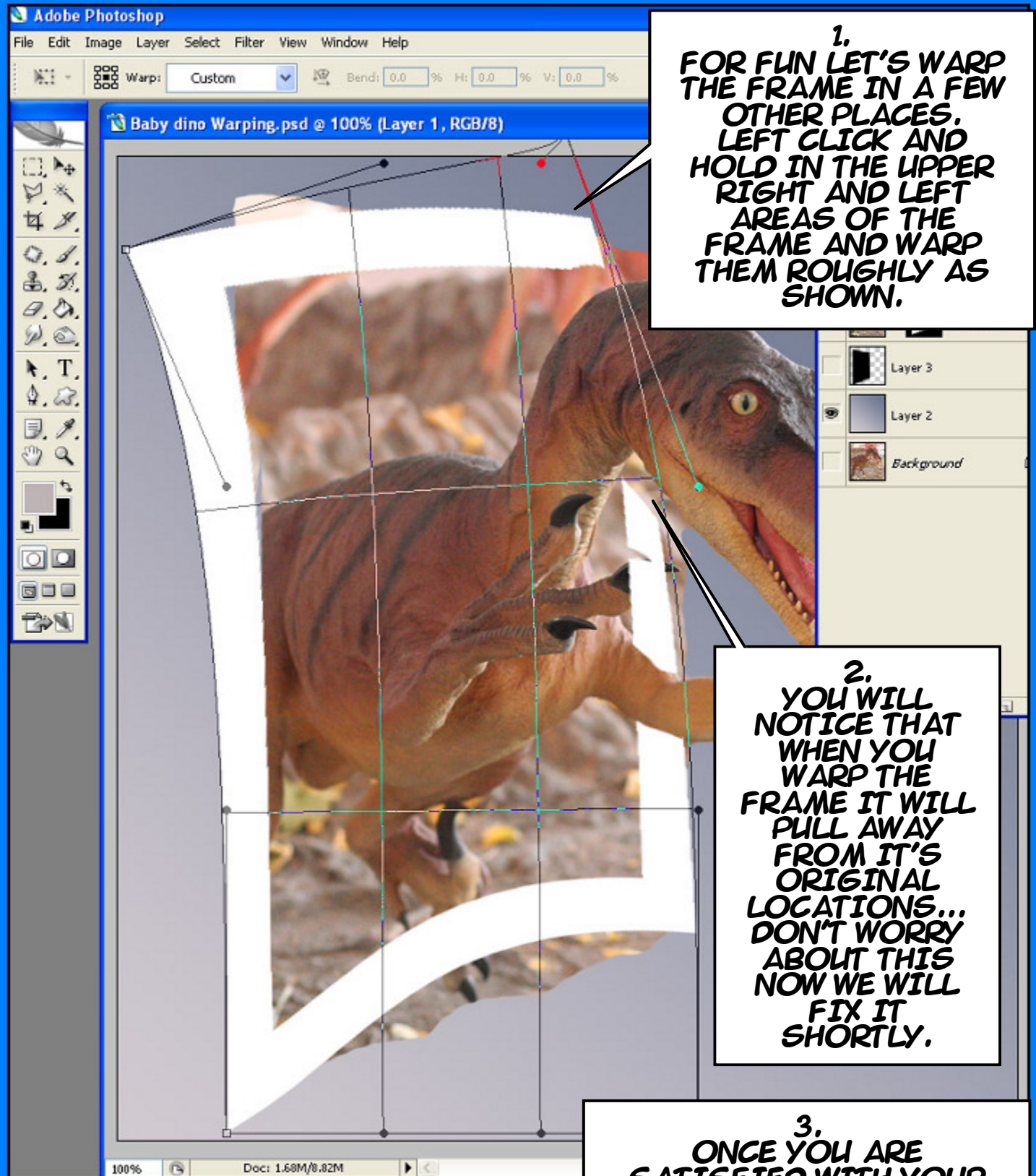


**NOW THAT WARP HAS BEEN SELECTED YOU SHOULD SEE A GRID POP UP ON YOUR IMAGE AS SHOWN HERE. NOW TO "WARP" YOUR FRAME LET'S MOVE TO THE NEXT PAGE...**



**LEFT CLICK AND HOLD ON THE AREA OF THE FRAME THAT THE POINTER IS SHOWING. NOW WHILE HOLDING THE LEFT MOUSE BUTTON MOVE THE MOUSE TO THE LEFT SLOWLY AND SLIGHTLY UP SO THAT THE FRAME BENDS ROUGHLY AS SHOWN.**

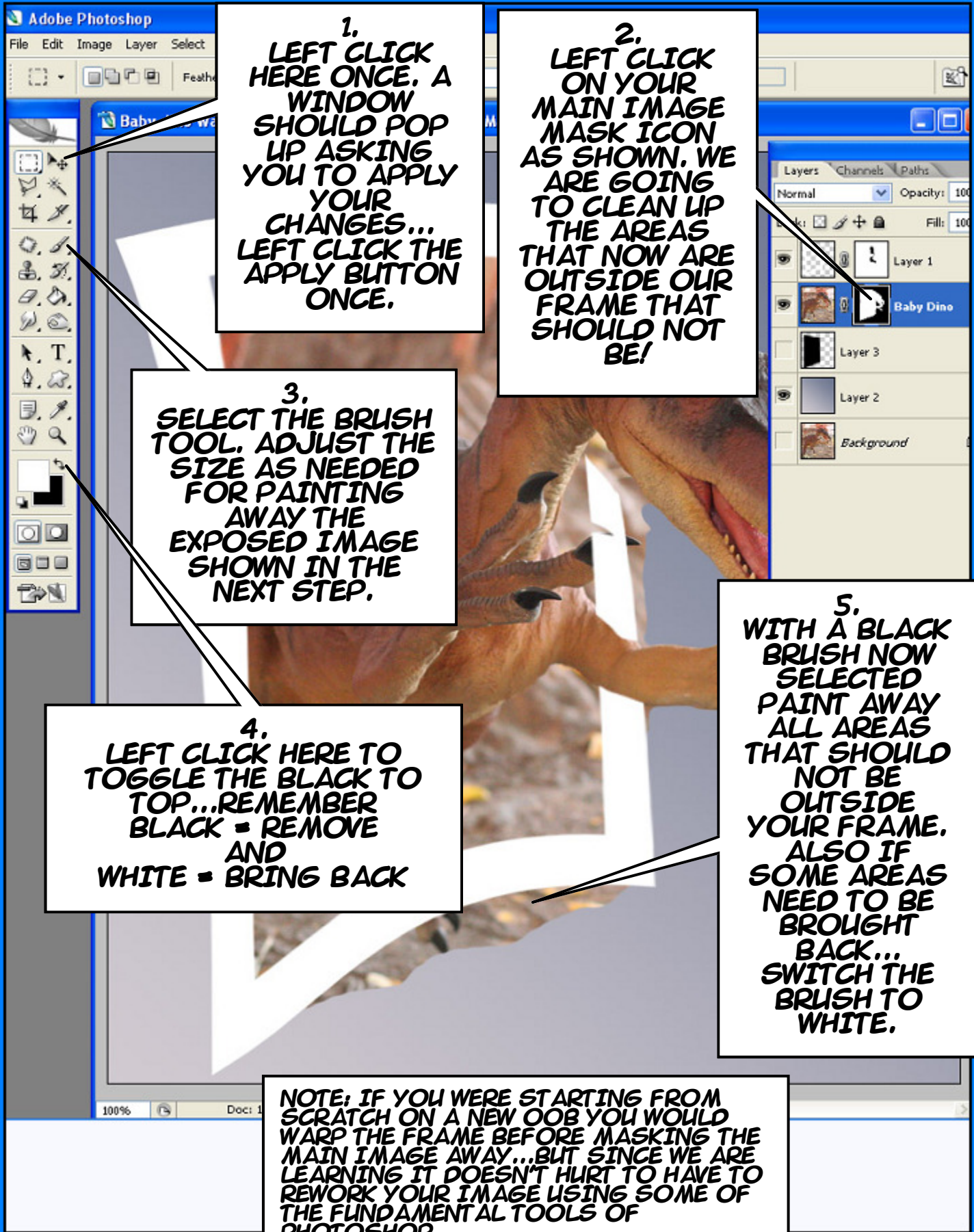
***CONGRATS!***  
***YOU HAVE JUST WARPED YOUR FRAME!***



1.  
FOR FUN LET'S WARP  
THE FRAME IN A FEW  
OTHER PLACES.  
LEFT CLICK AND  
HOLD IN THE UPPER  
RIGHT AND LEFT  
AREAS OF THE  
FRAME AND WARP  
THEM ROUGHLY AS  
SHOWN.

2.  
YOU WILL  
NOTICE THAT  
WHEN YOU  
WARP THE  
FRAME IT WILL  
PULL AWAY  
FROM IT'S  
ORIGINAL  
LOCATIONS...  
DON'T WORRY  
ABOUT THIS  
NOW WE WILL  
FIX IT  
SHORTLY.

3.  
ONCE YOU ARE  
SATISFIED WITH YOUR  
WARPING PROCEED ON  
TO THE NEXT PAGE...



1.  
LEFT CLICK  
HERE ONCE. A  
WINDOW  
SHOULD POP  
UP ASKING  
YOU TO APPLY  
YOUR  
CHANGES...  
LEFT CLICK THE  
APPLY BUTTON  
ONCE.

2.  
LEFT CLICK  
ON YOUR  
MAIN IMAGE  
MASK ICON  
AS SHOWN. WE  
ARE GOING  
TO CLEAN UP  
THE AREAS  
THAT NOW ARE  
OUTSIDE OUR  
FRAME THAT  
SHOULD NOT  
BE!

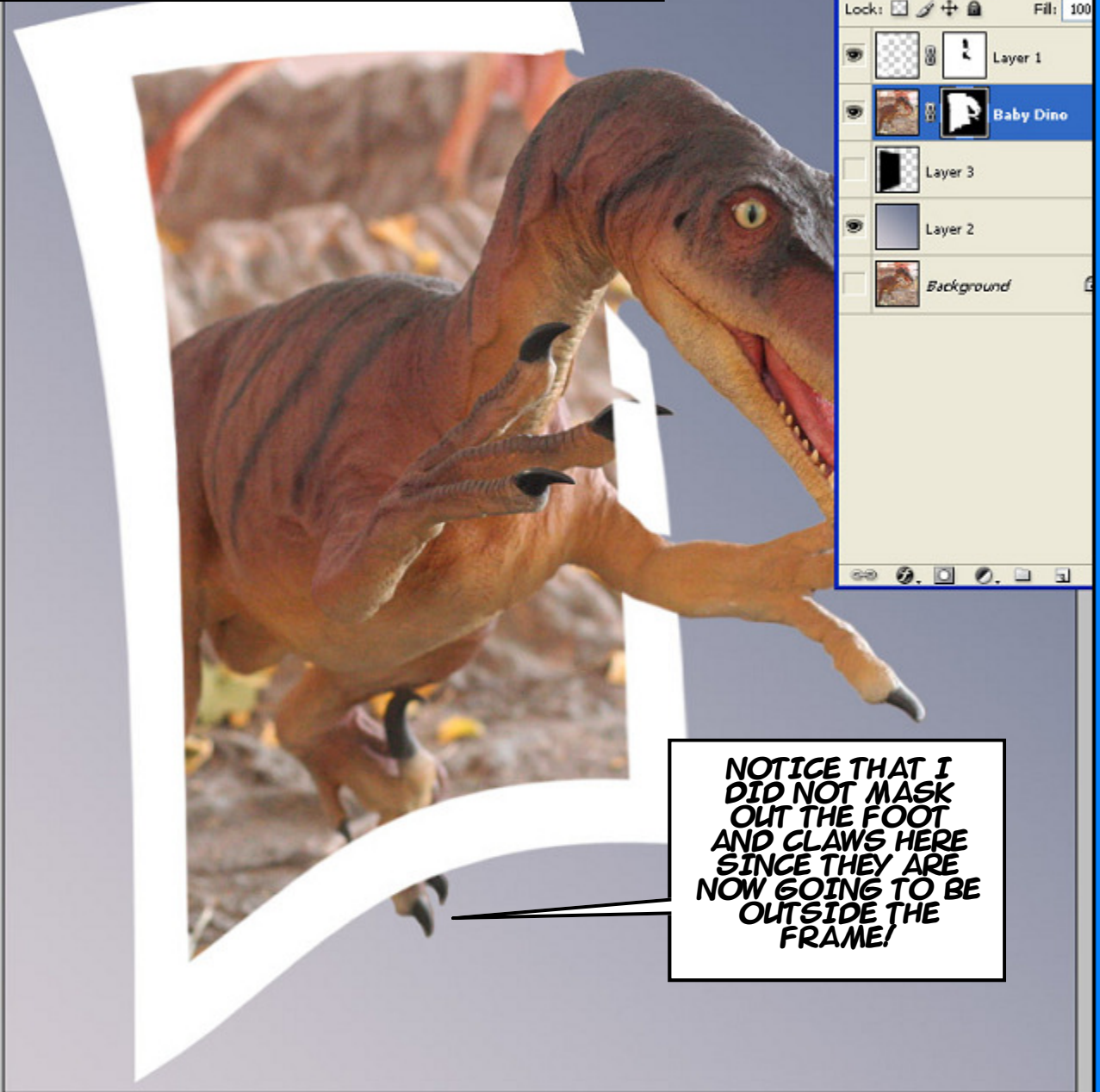
3.  
SELECT THE BRUSH  
TOOL. ADJUST THE  
SIZE AS NEEDED  
FOR PAINTING  
AWAY THE  
EXPOSED IMAGE  
SHOWN IN THE  
NEXT STEP.

4.  
LEFT CLICK HERE TO  
TOGGLE THE BLACK TO  
TOP...REMEMBER  
BLACK = REMOVE  
AND  
WHITE = BRING BACK

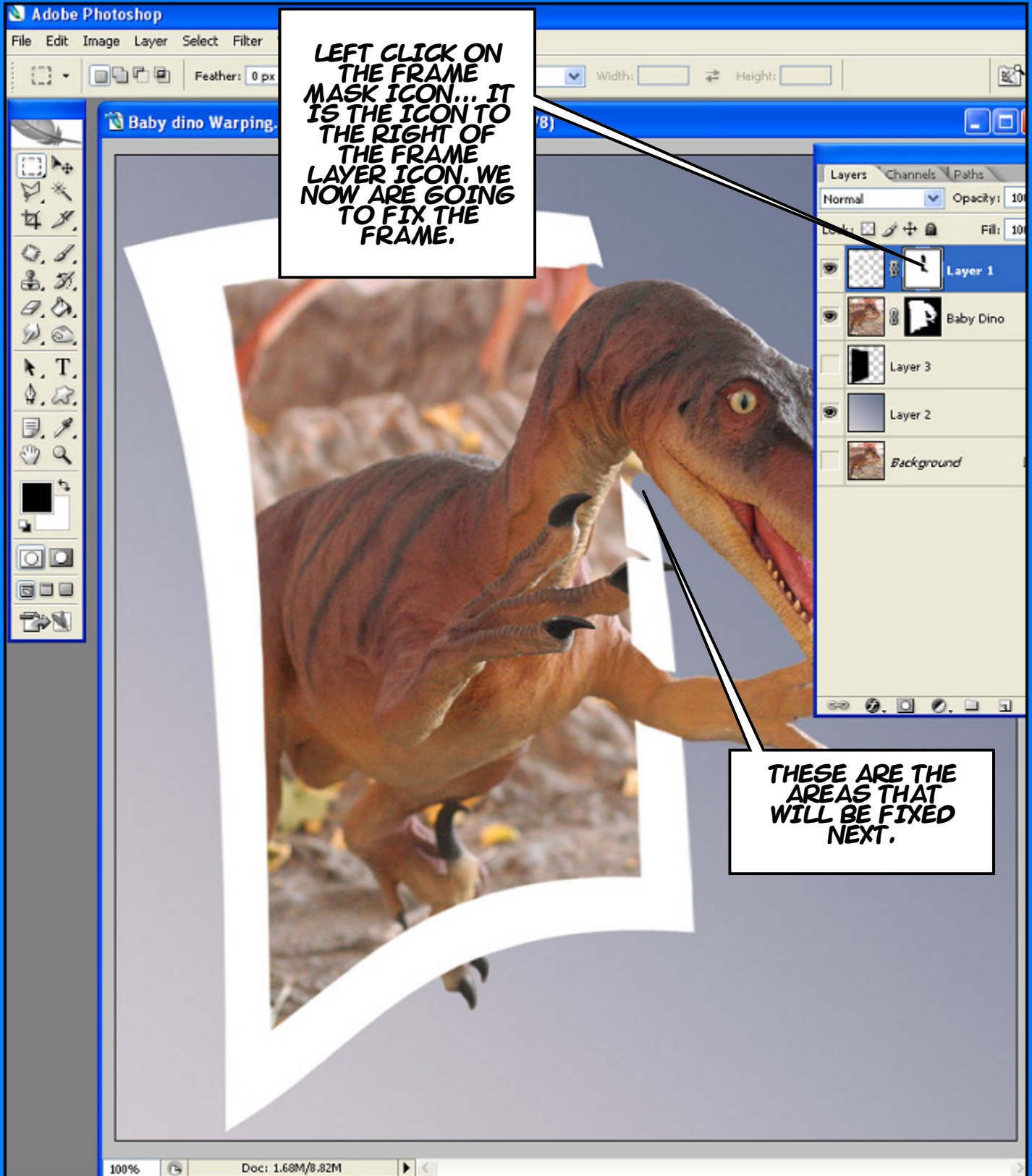
5.  
WITH A BLACK  
BRUSH NOW  
SELECTED  
PAINT AWAY  
ALL AREAS  
THAT SHOULD  
NOT BE  
OUTSIDE  
YOUR FRAME.  
ALSO IF  
SOME AREAS  
NEED TO BE  
BROUGHT  
BACK...  
SWITCH THE  
BRUSH TO  
WHITE.

NOTE: IF YOU WERE STARTING FROM  
SCRATCH ON A NEW OOB YOU WOULD  
WARP THE FRAME BEFORE MASKING THE  
MAIN IMAGE AWAY...BUT SINCE WE ARE  
LEARNING IT DOESN'T HURT TO HAVE TO  
REWORK YOUR IMAGE USING SOME OF  
THE FUNDAMENTAL TOOLS OF  
PHOTOSHOP.

**NOW AT THIS POINT YOUR IMAGE SHOULD HAVE ALL OF THE MAIN IMAGE OUTSIDE OF THE FRAME MASKED OUT AS SHOWN BELOW... EXCEPT THOSE PARTS THAT ARE TO BE KEPT FOR THE OUT OF FRAME PARTS SUCH AS THE HEAD AND ARM OF OUR DINO. NOTICE THOUGH THE FOOT AND CLAW HAS BEEN NOW INCLUDED JUST LIKE THE HEAD AND ARM WERE IN THE PREVIOUS TUTORIAL SINCE THEY ARE NOW OUTSIDE THE FRAME.**



**NOTICE THAT I DID NOT MASK OUT THE FOOT AND CLAWS HERE SINCE THEY ARE NOW GOING TO BE OUTSIDE THE FRAME!**



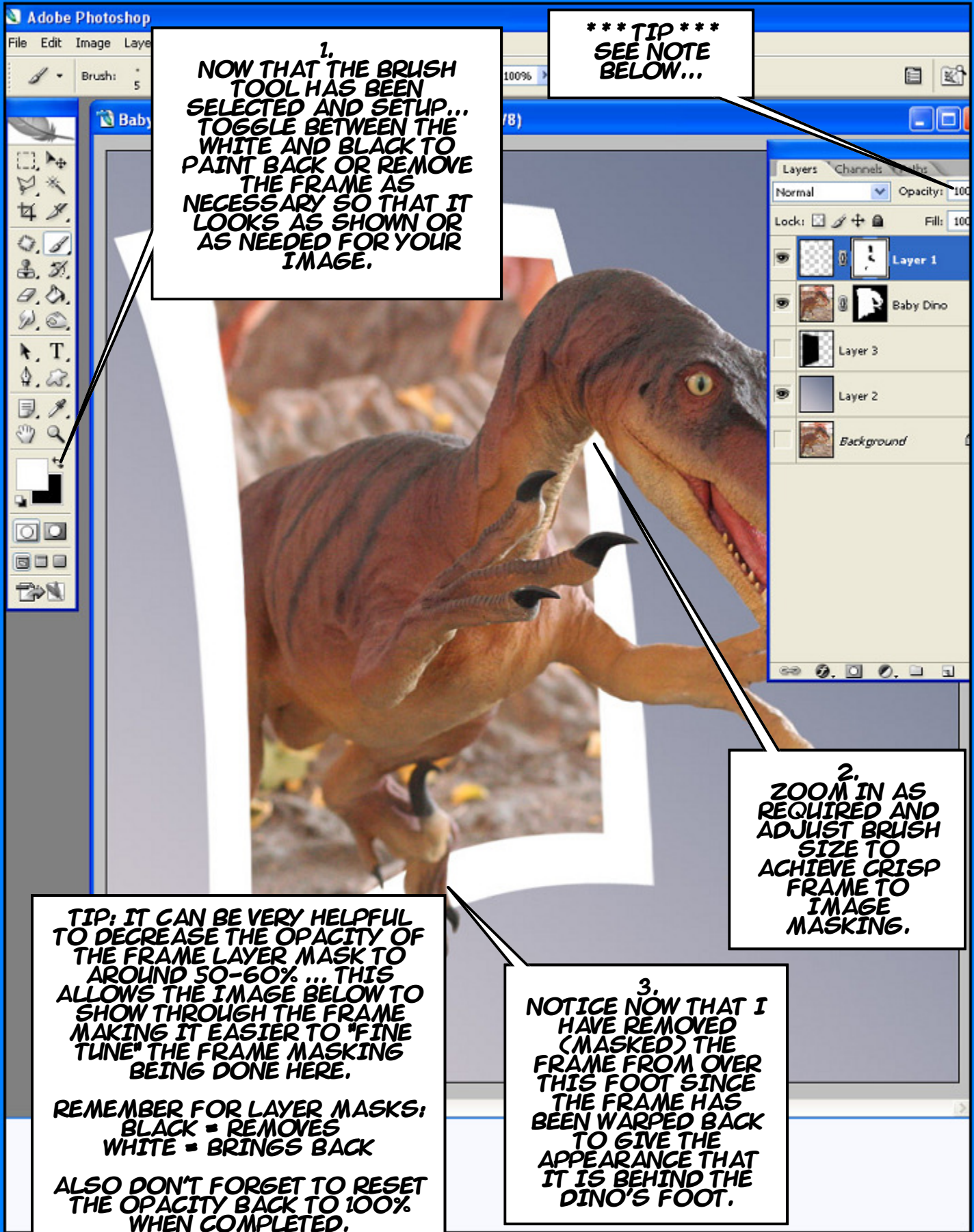
LEFT CLICK ON THE FRAME MASK ICON... IT IS THE ICON TO THE RIGHT OF THE FRAME LAYER ICON. WE NOW ARE GOING TO FIX THE FRAME.

THESE ARE THE AREAS THAT WILL BE FIXED NEXT.

**1.**  
**AFTER SELECTING THE BRUSH TOOL... SELECT HERE TO BRING UP THE BRUSH WINDOW AS SHOWN.**

**2.**  
**SELECT THE BRUSH TOOL AND ADJUST THE BRUSH TO A SMALL SIZE FOR PAINTING OUR FRAME BACK IN OR OUT DEPENDING ON HOW YOU WARPED IT.**

**3.**  
**SET THE BRUSH HARDNESS TO AROUND 80%. THIS WILL GIVE US A GOOD FEATHER BETWEEN THE WHITE FRAME AND YOUR PROTRUDING PARTS... IN MY CASE HERE THE HEAD, ARM, FOOT AND CLAWS.**



**\*\*\* TIP \*\*\*  
SEE NOTE  
BELOW...**

**1.  
NOW THAT THE BRUSH  
TOOL HAS BEEN  
SELECTED AND SETUP...  
TOGGLE BETWEEN THE  
WHITE AND BLACK TO  
PAINT BACK OR REMOVE  
THE FRAME AS  
NECESSARY SO THAT IT  
LOOKS AS SHOWN OR  
AS NEEDED FOR YOUR  
IMAGE.**

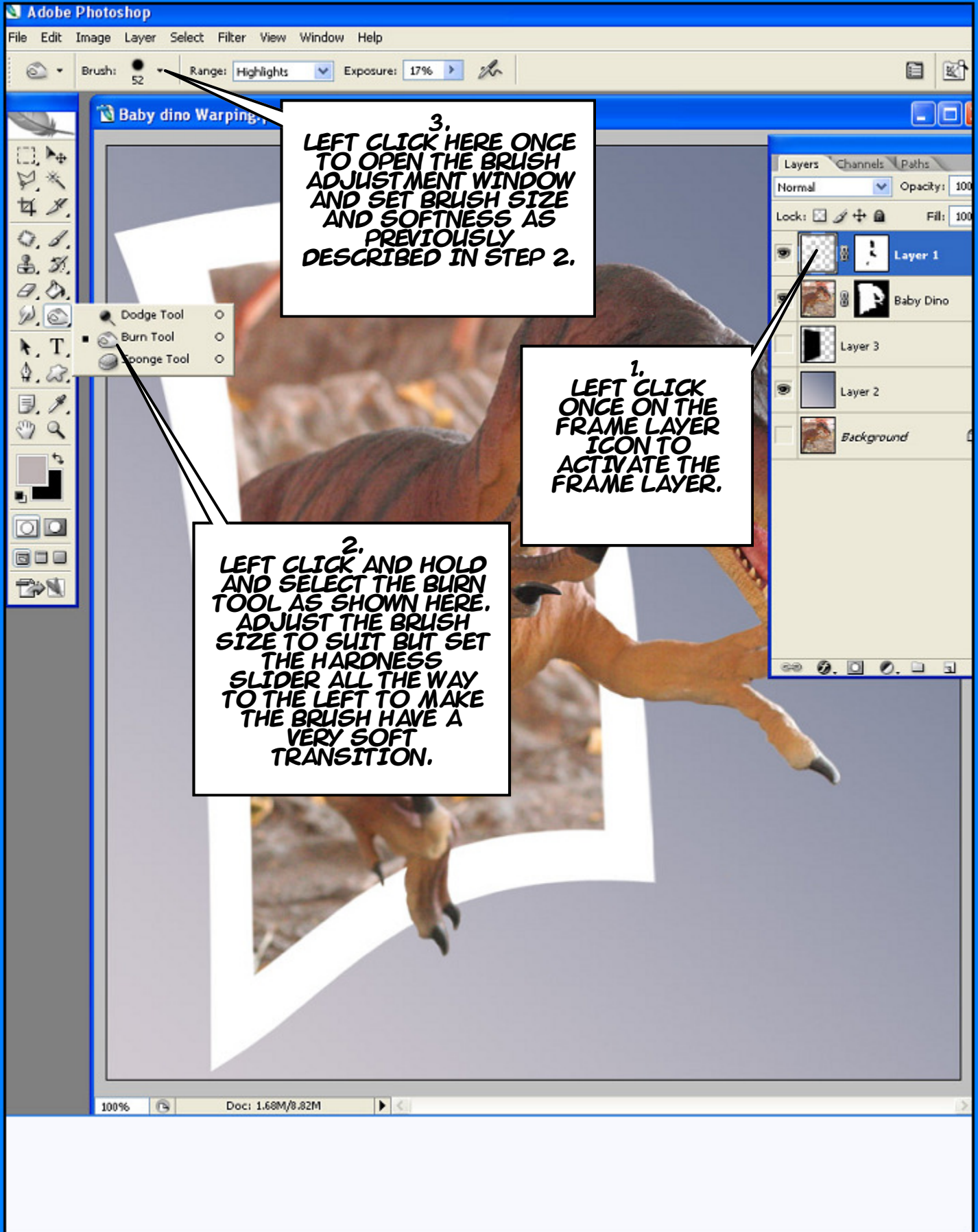
**2.  
ZOOM IN AS  
REQUIRED AND  
ADJUST BRUSH  
SIZE TO  
ACHIEVE CRISP  
FRAME TO  
IMAGE  
MASKING.**

**TIP: IT CAN BE VERY HELPFUL  
TO DECREASE THE OPACITY OF  
THE FRAME LAYER MASK TO  
AROUND 50-60% ... THIS  
ALLOWS THE IMAGE BELOW TO  
SHOW THROUGH THE FRAME  
MAKING IT EASIER TO "FINE  
TUNE" THE FRAME MASKING  
BEING DONE HERE.**

**REMEMBER FOR LAYER MASKS:  
BLACK = REMOVES  
WHITE = BRINGS BACK**

**ALSO DON'T FORGET TO RESET  
THE OPACITY BACK TO 100%  
WHEN COMPLETED.**

**3.  
NOTICE NOW THAT I  
HAVE REMOVED  
(MASKED) THE  
FRAME FROM OVER  
THIS FOOT SINCE  
THE FRAME HAS  
BEEN WARPED BACK  
TO GIVE THE  
APPEARANCE THAT  
IT IS BEHIND THE  
DINO'S FOOT.**



**3.**  
LEFT CLICK HERE ONCE TO OPEN THE BRUSH ADJUSTMENT WINDOW AND SET BRUSH SIZE AND SOFTNESS AS PREVIOUSLY DESCRIBED IN STEP 2.

**1.**  
LEFT CLICK ONCE ON THE FRAME LAYER ICON TO ACTIVATE THE FRAME LAYER.

**2.**  
LEFT CLICK AND HOLD AND SELECT THE BURN TOOL AS SHOWN HERE. ADJUST THE BRUSH SIZE TO SUIT BUT SET THE HARDNESS SLIDER ALL THE WAY TO THE LEFT TO MAKE THE BRUSH HAVE A VERY SOFT TRANSITION.

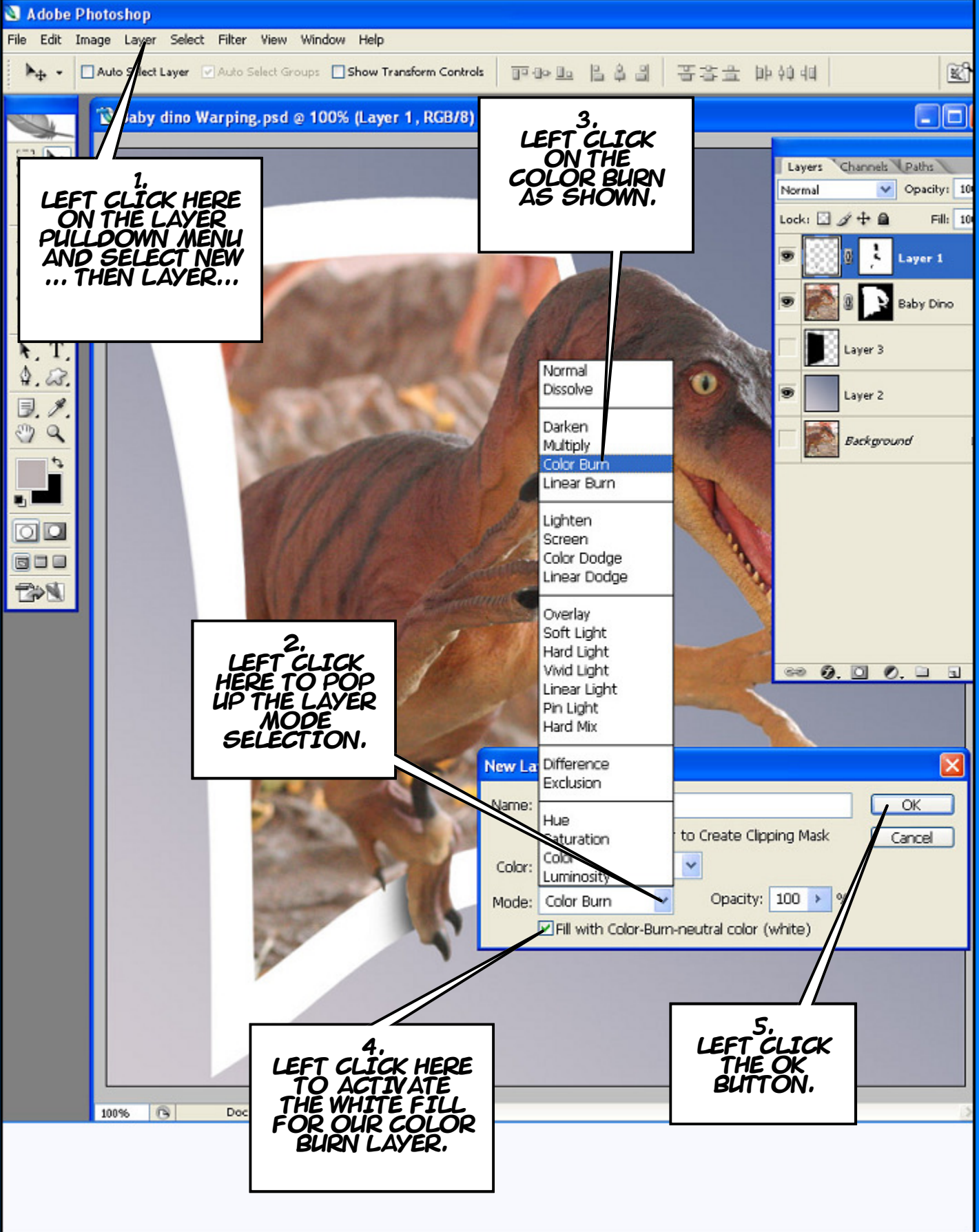
**2.**  
ADJUST THE  
EXPOSURE TO  
AROUND 25%.

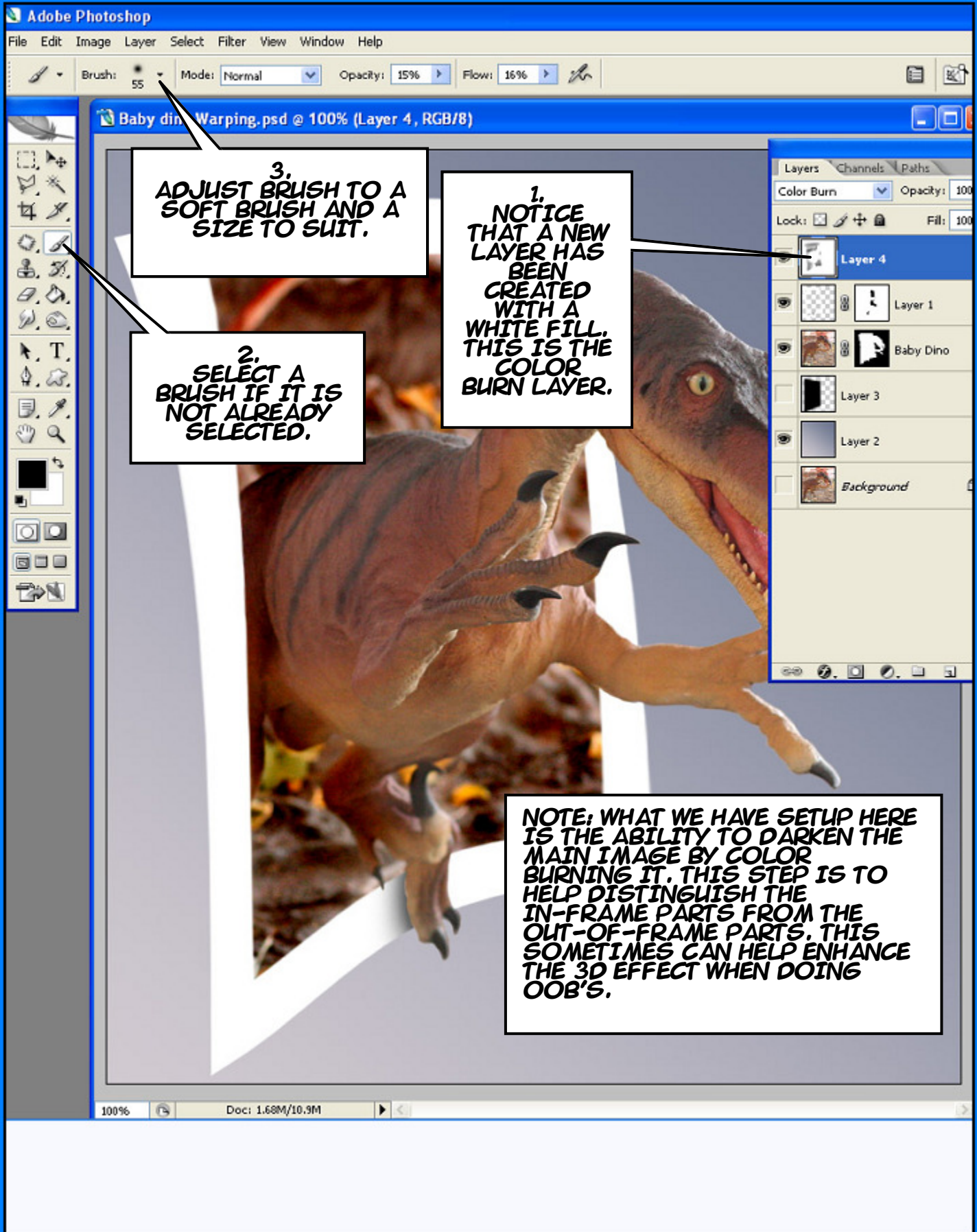
**1.**  
LEFT CLICK AND  
HOLD... SELECT  
THE HIGHLIGHTS  
SELECTION AS  
SHOWN.

**NOTE: WE HAVE JUST SELECTED THE BURN TOOL...THE REASON FOR THIS...TO ADD SOME SHADOW EFFECTS ON OUR FRAME. NOW IF YOU ARE USING YOUR OWN IMAGE TO DO THIS TUTORIAL YOUR SHADOWING LOCATIONS WILL BE DIFFERENT. SO USE THIS STEP AS A GENERAL GUIDE TO ACHIEVE YOUR SHADOWING GOALS.**

**4.**  
BY USING A SOFT  
BRUSH IT  
PROVIDES A NICE  
TRANSITION FOR  
THE SHADOW AS  
SEEN HERE.

**3.**  
USING THE BURN TOOL  
PAINT A SHADOW BY LEFT  
CLICKING AND HOLDING  
AND PAINT OVER THIS AREA  
OF THE FRAME. NO NEED TO  
WORRY ABOUT AFFECTING  
THE MAIN IMAGE, ONLY THE  
FRAME WILL BE CHANGED.  
MAKE A COUPLE OF  
PASSES WITH THE BRUSH  
AND LET UP AND LEFT CLICK  
AND HOLD AGAIN, BRUSH  
OVER THE AREA AGAIN TO  
DARKEN...REPEAT AS  
NEEDED TO GET THE  
DESIRED SHADOW  
DARKNESS.



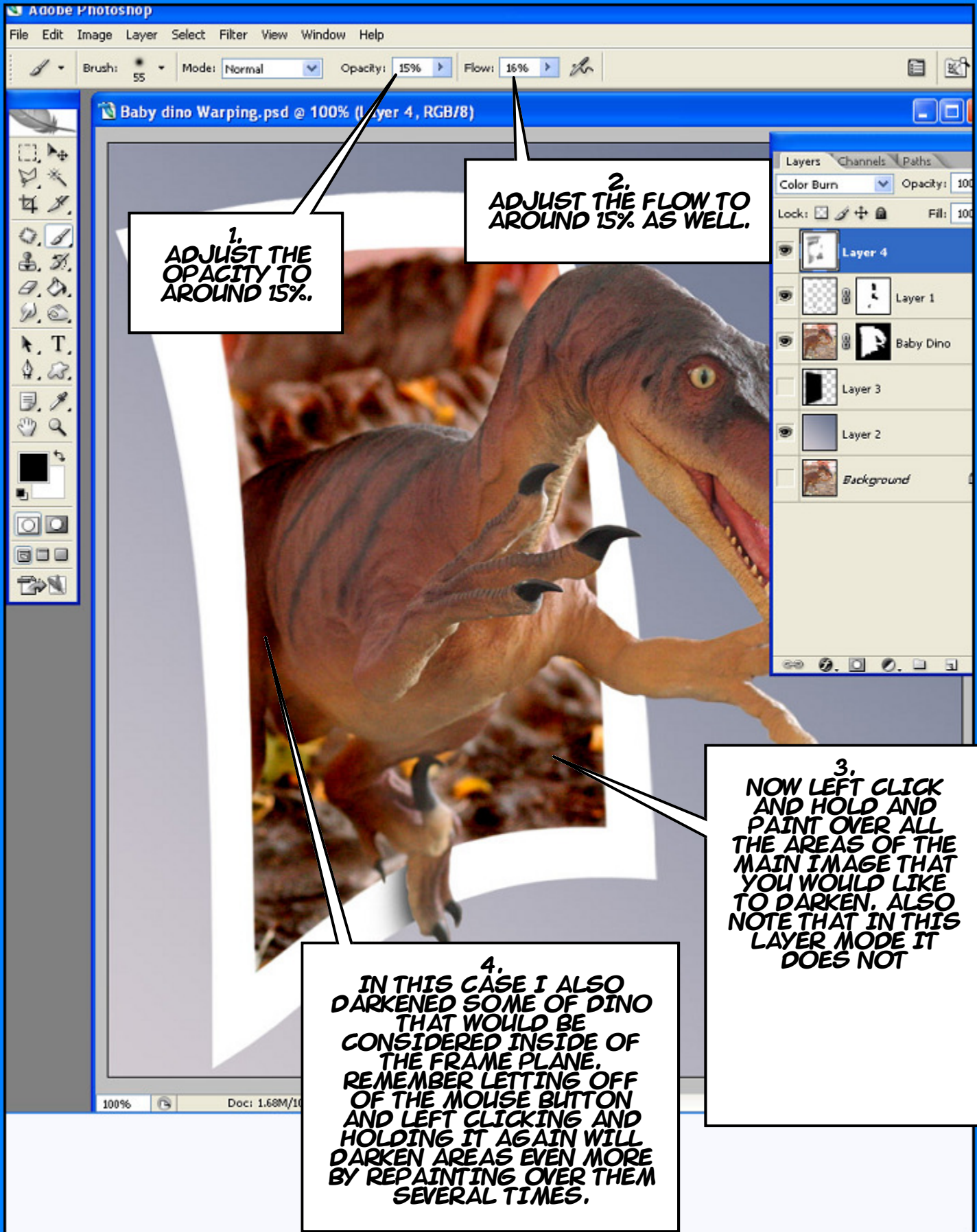


3. ADJUST BRUSH TO A SOFT BRUSH AND A SIZE TO SUIT.

2. SELECT A BRUSH IF IT IS NOT ALREADY SELECTED.

1. NOTICE THAT A NEW LAYER HAS BEEN CREATED WITH A WHITE FILL. THIS IS THE COLOR BURN LAYER.

NOTE: WHAT WE HAVE SETUP HERE IS THE ABILITY TO DARKEN THE MAIN IMAGE BY COLOR BURNING IT. THIS STEP IS TO HELP DISTINGUISH THE IN-FRAME PARTS FROM THE OUT-OF-FRAME PARTS. THIS SOMETIMES CAN HELP ENHANCE THE 3D EFFECT WHEN DOING OOB'S.

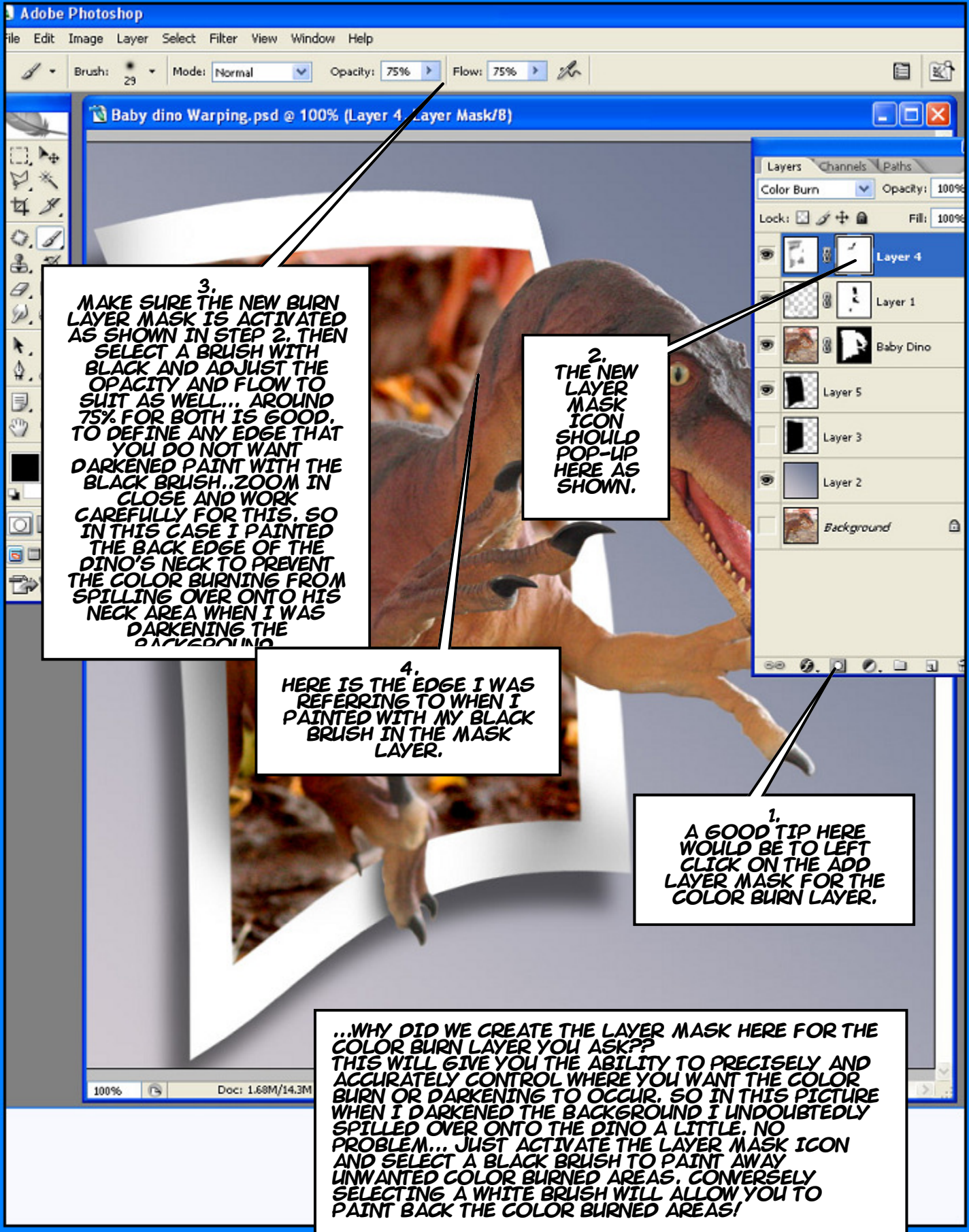


1.  
ADJUST THE  
OPACITY TO  
AROUND 15%.

2.  
ADJUST THE FLOW TO  
AROUND 15% AS WELL.

3.  
NOW LEFT CLICK  
AND HOLD AND  
PAINT OVER ALL  
THE AREAS OF THE  
MAIN IMAGE THAT  
YOU WOULD LIKE  
TO DARKEN. ALSO  
NOTE THAT IN THIS  
LAYER MODE IT  
DOES NOT

4.  
IN THIS CASE I ALSO  
DARKENED SOME OF DINO  
THAT WOULD BE  
CONSIDERED INSIDE OF  
THE FRAME PLANE.  
REMEMBER LETTING OFF  
OF THE MOUSE BUTTON  
AND LEFT CLICKING AND  
HOLDING IT AGAIN WILL  
DARKEN AREAS EVEN MORE  
BY REPAINTING OVER THEM  
SEVERAL TIMES.



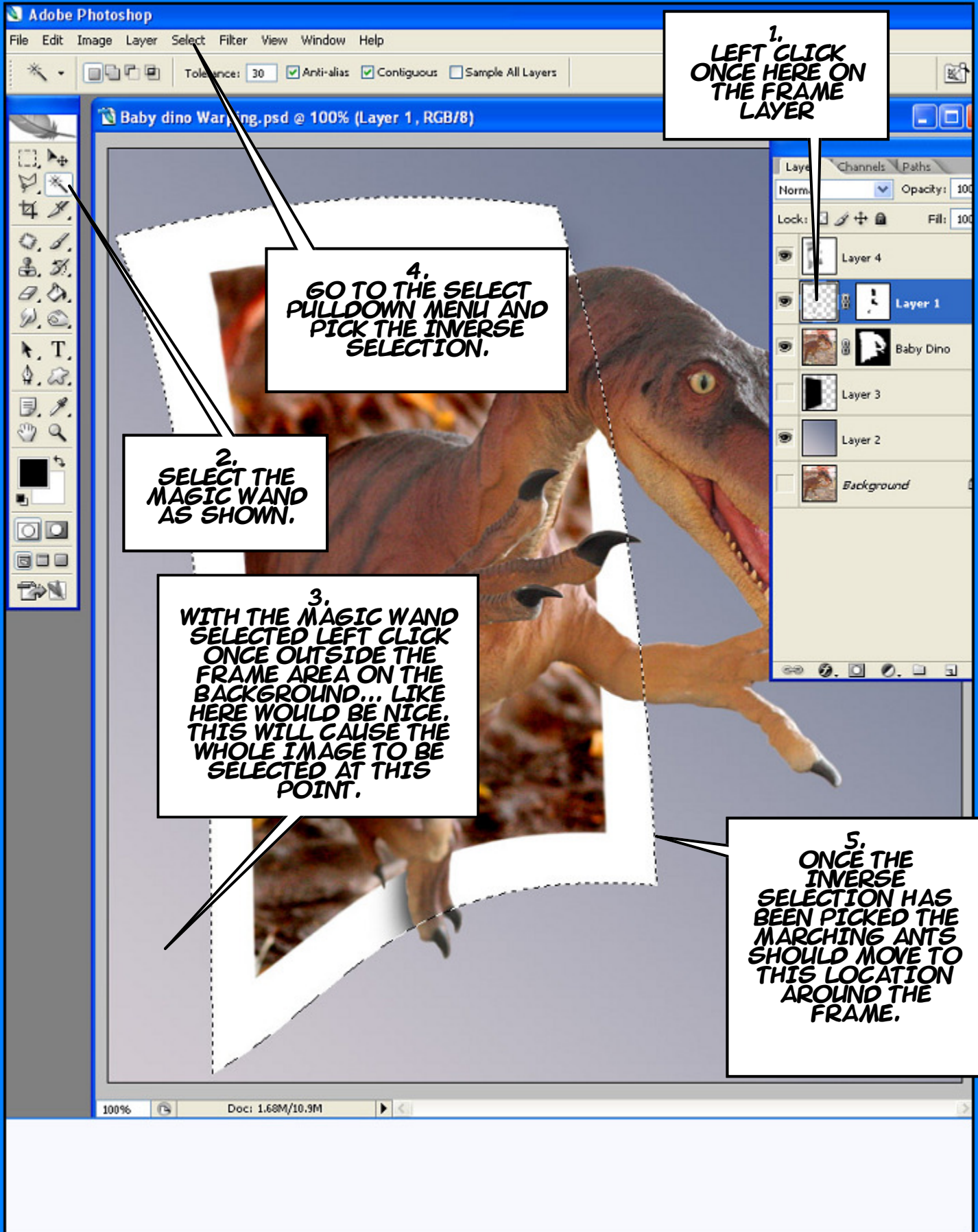
3. MAKE SURE THE NEW BURN LAYER MASK IS ACTIVATED AS SHOWN IN STEP 2. THEN SELECT A BRUSH WITH BLACK AND ADJUST THE OPACITY AND FLOW TO SUIT AS WELL... AROUND 75% FOR BOTH IS GOOD. TO DEFINE ANY EDGE THAT YOU DO NOT WANT DARKENED PAINT WITH THE BLACK BRUSH..ZOOM IN CLOSE AND WORK CAREFULLY FOR THIS, SO IN THIS CASE I PAINTED THE BACK EDGE OF THE DINO'S NECK TO PREVENT THE COLOR BURNING FROM SPILLING OVER ONTO HIS NECK AREA WHEN I WAS DARKENING THE BACKGROUND.

2. THE NEW LAYER MASK ICON SHOULD POP-UP HERE AS SHOWN.

4. HERE IS THE EDGE I WAS REFERRING TO WHEN I PAINTED WITH MY BLACK BRUSH IN THE MASK LAYER.

1. A GOOD TIP HERE WOULD BE TO LEFT CLICK ON THE ADD LAYER MASK FOR THE COLOR BURN LAYER.

...WHY DID WE CREATE THE LAYER MASK HERE FOR THE COLOR BURN LAYER YOU ASK?? THIS WILL GIVE YOU THE ABILITY TO PRECISELY AND ACCURATELY CONTROL WHERE YOU WANT THE COLOR BURN OR DARKENING TO OCCUR. SO IN THIS PICTURE WHEN I DARKENED THE BACKGROUND I UNDOUBTEDLY SPILLED OVER ONTO THE DINO A LITTLE. NO PROBLEM... JUST ACTIVATE THE LAYER MASK AND SELECT A BLACK BRUSH TO PAINT AWAY UNWANTED COLOR BURNED AREAS. CONVERSELY SELECTING A WHITE BRUSH WILL ALLOW YOU TO PAINT BACK THE COLOR BURNED AREAS!



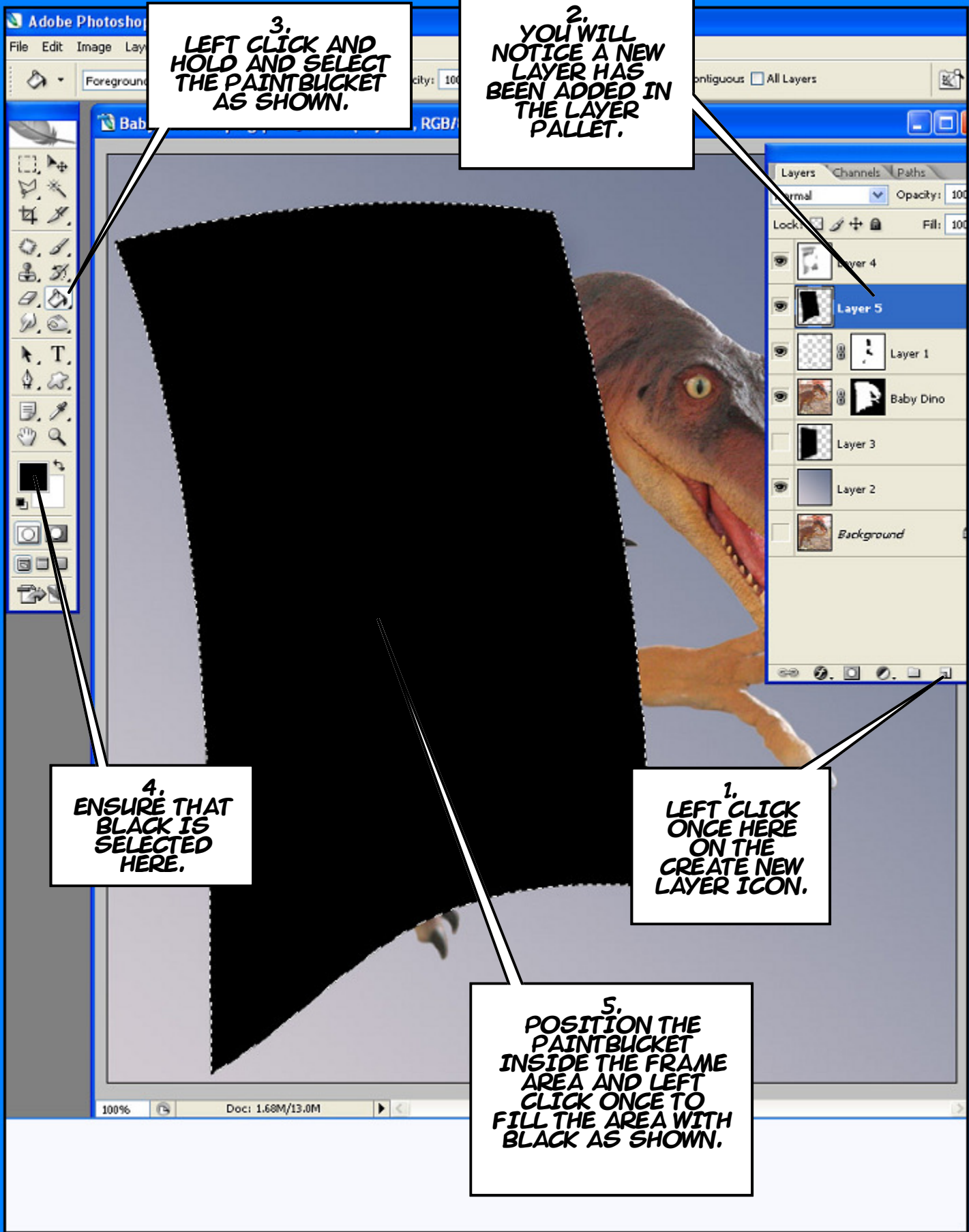
1.  
**LEFT CLICK  
ONCE HERE ON  
THE FRAME  
LAYER**

4.  
**GO TO THE SELECT  
PULLDOWN MENU AND  
PICK THE INVERSE  
SELECTION.**

2.  
**SELECT THE  
MAGIC WAND  
AS SHOWN.**

3.  
**WITH THE MAGIC WAND  
SELECTED LEFT CLICK  
ONCE OUTSIDE THE  
FRAME AREA ON THE  
BACKGROUND... LIKE  
HERE WOULD BE NICE.  
THIS WILL CAUSE THE  
WHOLE IMAGE TO BE  
SELECTED AT THIS  
POINT.**

5.  
**ONCE THE  
INVERSE  
SELECTION HAS  
BEEN PICKED THE  
MARCHING ANTS  
SHOULD MOVE TO  
THIS LOCATION  
AROUND THE  
FRAME.**



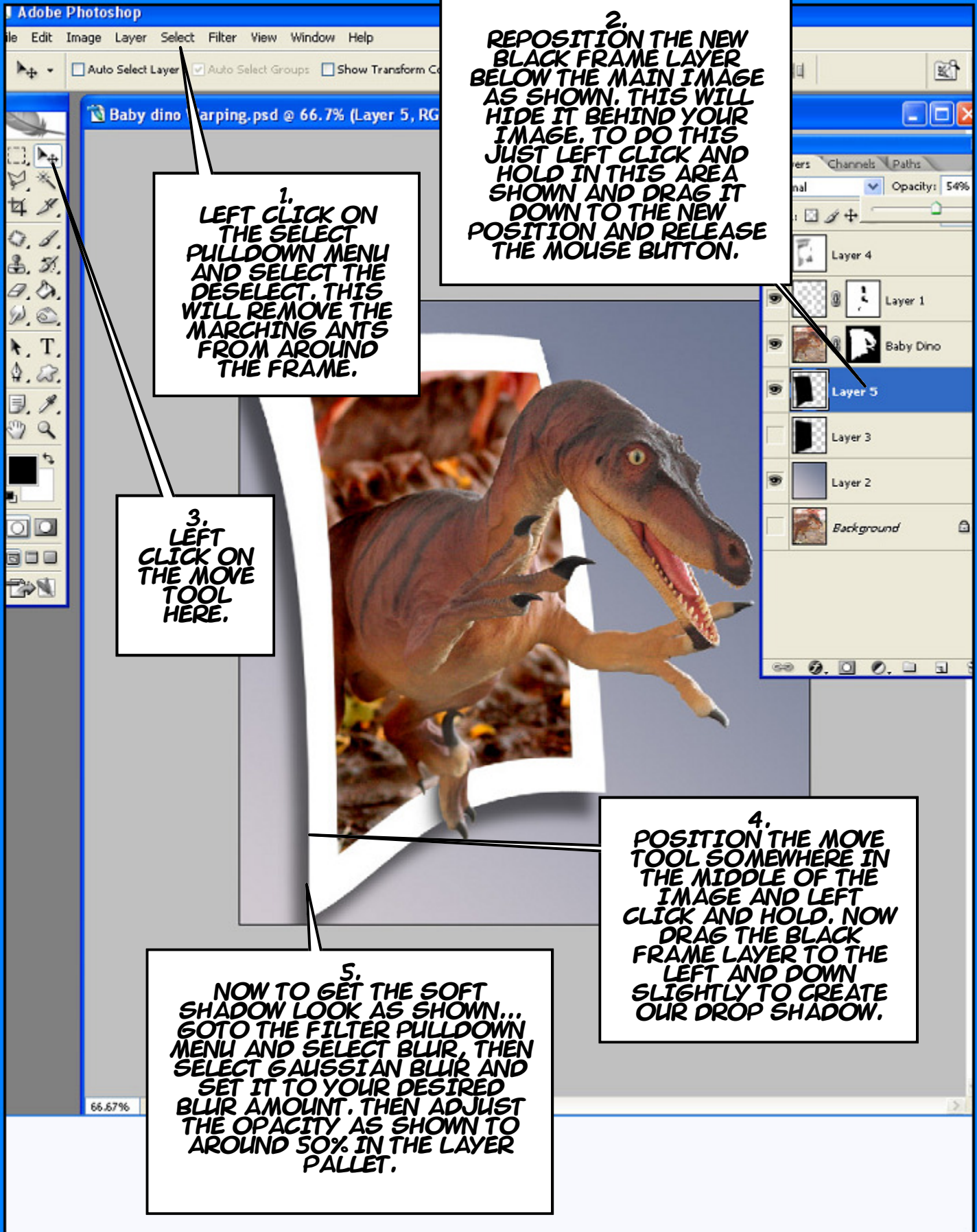
3. LEFT CLICK AND HOLD AND SELECT THE PAINTBUCKET AS SHOWN.

2. YOU WILL NOTICE A NEW LAYER HAS BEEN ADDED IN THE LAYER PALLET.

4. ENSURE THAT BLACK IS SELECTED HERE.

1. LEFT CLICK ONCE HERE ON THE CREATE NEW LAYER ICON.

5. POSITION THE PAINTBUCKET INSIDE THE FRAME AREA AND LEFT CLICK ONCE TO FILL THE AREA WITH BLACK AS SHOWN.



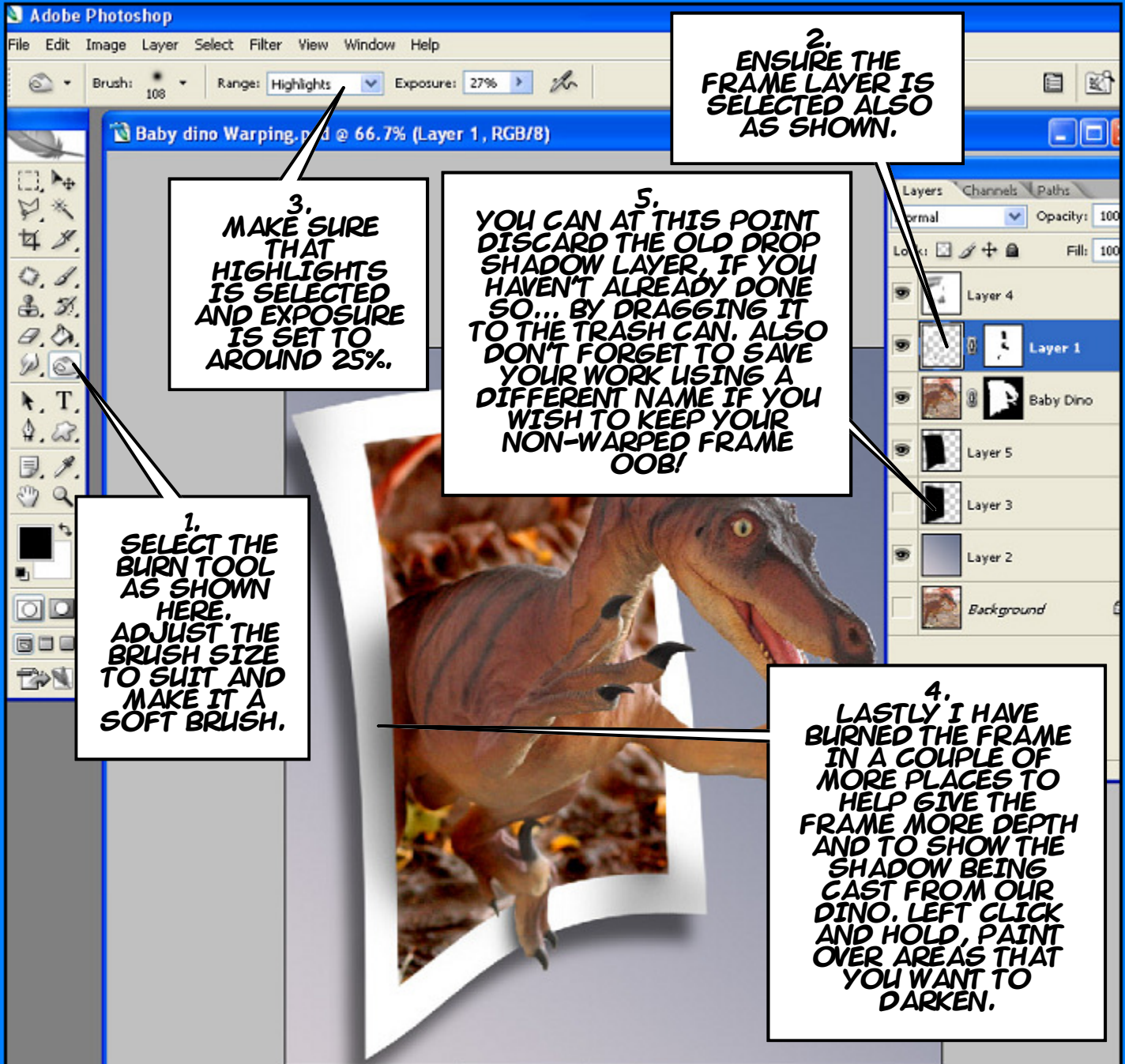
1.  
LEFT CLICK ON  
THE SELECT  
PULLDOWN MENU  
AND SELECT THE  
DESELECT. THIS  
WILL REMOVE THE  
MARCHING ANTS  
FROM AROUND  
THE FRAME.

2.  
REPOSITION THE NEW  
BLACK FRAME LAYER  
BELOW THE MAIN IMAGE  
AS SHOWN. THIS WILL  
HIDE IT BEHIND YOUR  
IMAGE. TO DO THIS  
JUST LEFT CLICK AND  
HOLD IN THIS AREA  
SHOWN AND DRAG IT  
DOWN TO THE NEW  
POSITION AND RELEASE  
THE MOUSE BUTTON.

3.  
LEFT  
CLICK ON  
THE MOVE  
TOOL  
HERE.

4.  
POSITION THE MOVE  
TOOL SOMEWHERE IN  
THE MIDDLE OF THE  
IMAGE AND LEFT  
CLICK AND HOLD. NOW  
DRAG THE BLACK  
FRAME LAYER TO THE  
LEFT AND DOWN  
SLIGHTLY TO CREATE  
OUR DROP SHADOW.

5.  
NOW TO GET THE SOFT  
SHADOW LOOK AS SHOWN...  
GOTO THE FILTER PULLDOWN  
MENU AND SELECT BLUR, THEN  
SELECT GAUSSIAN BLUR AND  
SET IT TO YOUR DESIRED  
BLUR AMOUNT. THEN ADJUST  
THE OPACITY AS SHOWN TO  
AROUND 50% IN THE LAYER  
PALLET.



1. SELECT THE BURN TOOL AS SHOWN HERE. ADJUST THE BRUSH SIZE TO SUIT AND MAKE IT A SOFT BRUSH.

3. MAKE SURE THAT HIGHLIGHTS IS SELECTED AND EXPOSURE IS SET TO AROUND 25%.

2. ENSURE THE FRAME LAYER IS SELECTED ALSO AS SHOWN.

5. YOU CAN AT THIS POINT DISCARD THE OLD DROP SHADOW LAYER, IF YOU HAVEN'T ALREADY DONE SO... BY DRAGGING IT TO THE TRASH CAN. ALSO DON'T FORGET TO SAVE YOUR WORK USING A DIFFERENT NAME IF YOU WISH TO KEEP YOUR NON-WARPED FRAME OOB!

4. LASTLY I HAVE BURNED THE FRAME IN A COUPLE OF MORE PLACES TO HELP GIVE THE FRAME MORE DEPTH AND TO SHOW THE SHADOW BEING CAST FROM OUR DINO. LEFT CLICK AND HOLD, PAINT OVER AREAS THAT YOU WANT TO DARKEN.

**WOW!**

**YOU HAVE JUST WARPED A FRAME!**

**NOW GO AND WARP YOUR OWN FRAMES!**